

Verde Springbrook Corporate Center 8

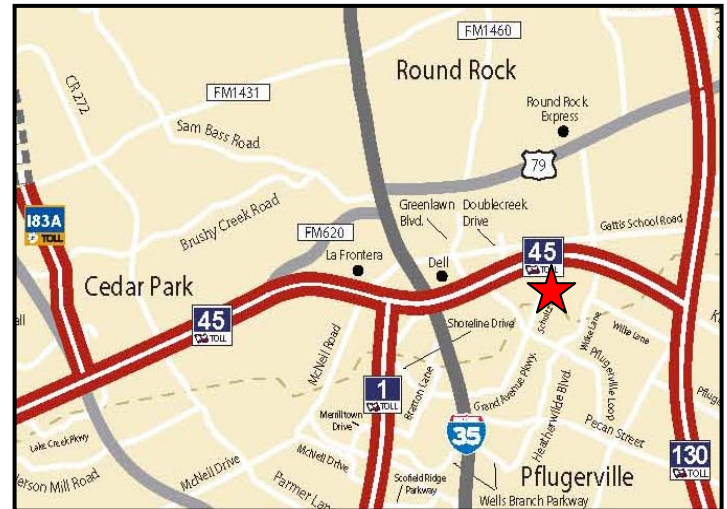
1121 Meister Lane

Pflugerville (Austin), Texas



Building Features

Total Building Size:	160,000 S.F.
Available Space:	160,000 S.F.
Minimum Space:	16,000 S.F.
Construction Type:	Concrete Tilt Wall
Clear Height:	24'
Building Dimensions:	800' x 200'
Column Spacing:	40' x 40'
Fire Protection:	ESFR
Loading:	Dock High
Truck Court Depth:	180' (shared)
Easy Access to IH 35, SH 45 and SH 130	
Outstanding visibility from SH 45	
Triple Freeport Tax Exemption Available	



For More Information Contact:
Rob Wendt, Vice President
VERDE CORPORATE REALTY SERVICES
Office: (512) 238-7463
Mobile: (512) 809-2357
Toll Free: (888) 411-8277
rob.wendt@verdecrs.com



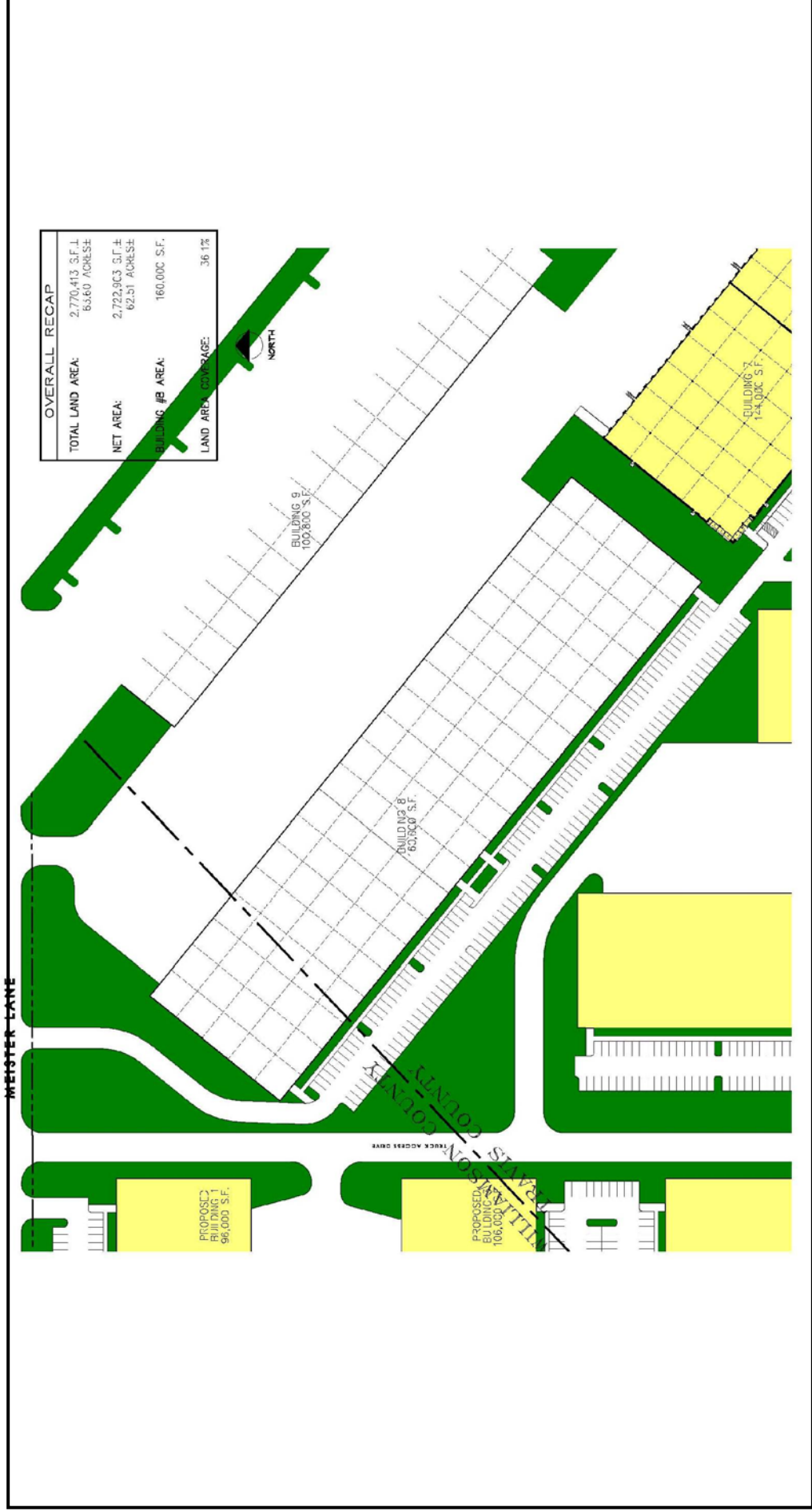
VERDE CORPORATE REALTY SERVICES

309 W. Main, Suite 110 • Round Rock, Texas 78664 • (512) 238-7463

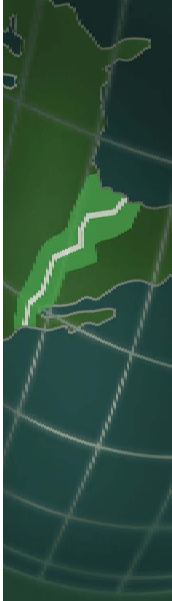
Verde Springbrook Corporate Center 8

1121 Meister Lane

Pflugerville (Austin), Texas



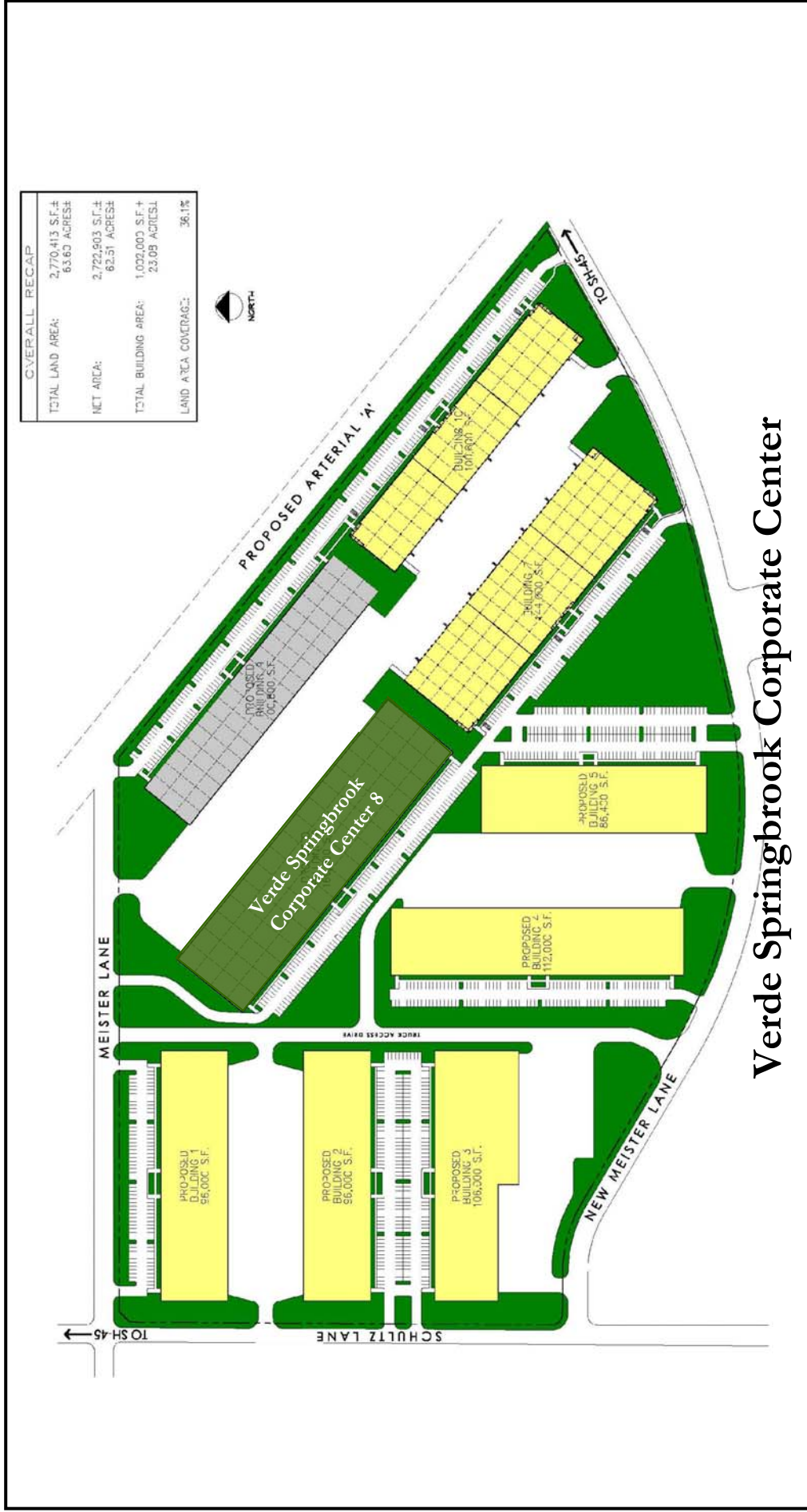
VERDE CORPORATE REALTY SERVICES
 309 W. Main, Suite 110 • Round Rock Texas 78664 • (512) 238-7463



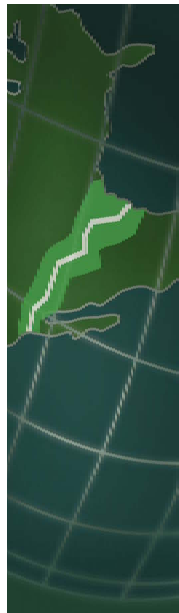
Verde Springbrook Corporate Center 8

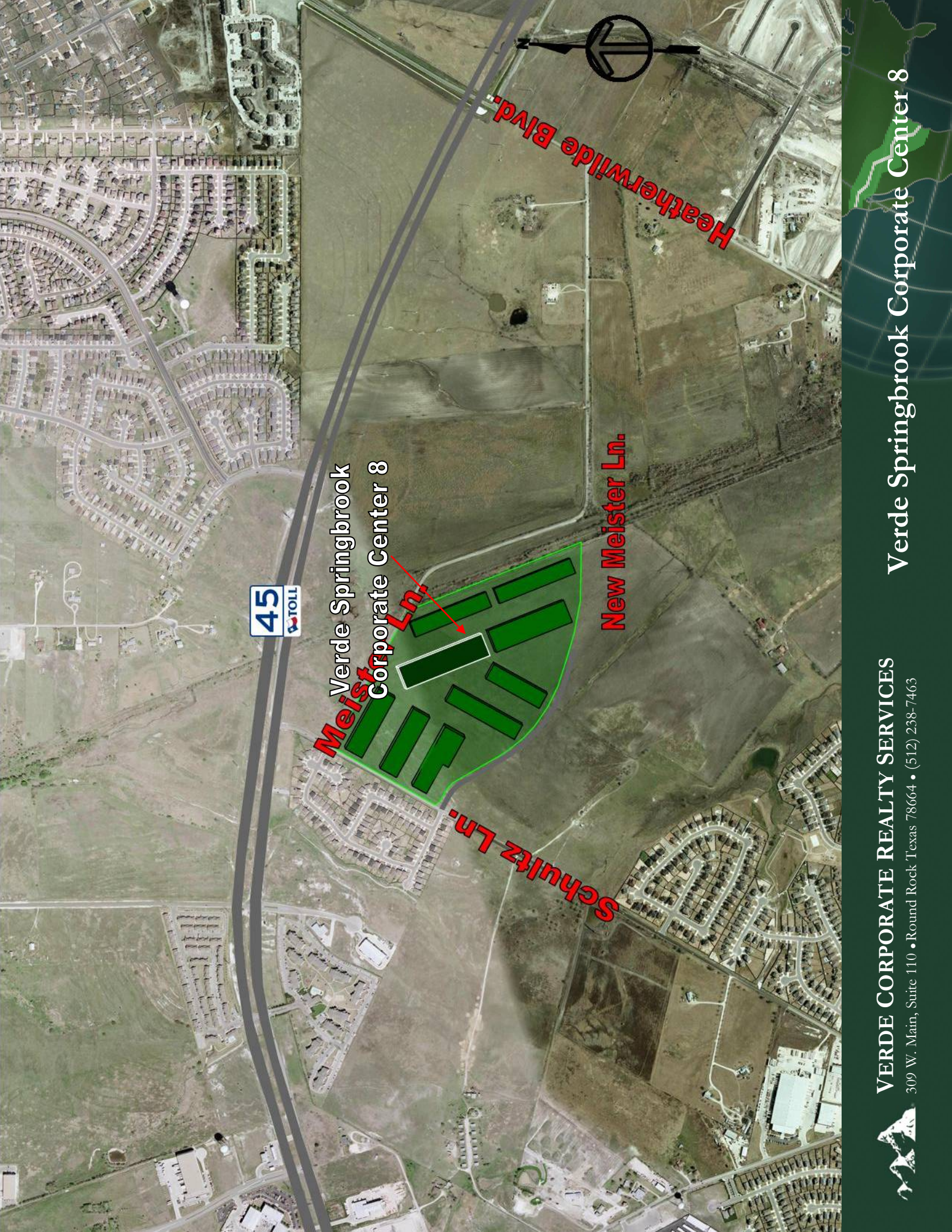
1121 Meister Lane

Pflugerville (Austin), Texas



VERDE CORPORATE REALTY SERVICES
 309 W. Main, Suite 110 • Round Rock Texas 78664 • (512) 238-7463





45
A TOILE

Verde Springbrook
Corporate Center 8

Meister Ln.

New Meister Ln.

Schuitz Ln.

Heatherwilde Blvd.



VERDE CORPORATE REALTY SERVICES

309 W. Main, Suite 110 • Round Rock Texas 78664 • (512) 238-7463

Verde Springbrook Corporate Center 8